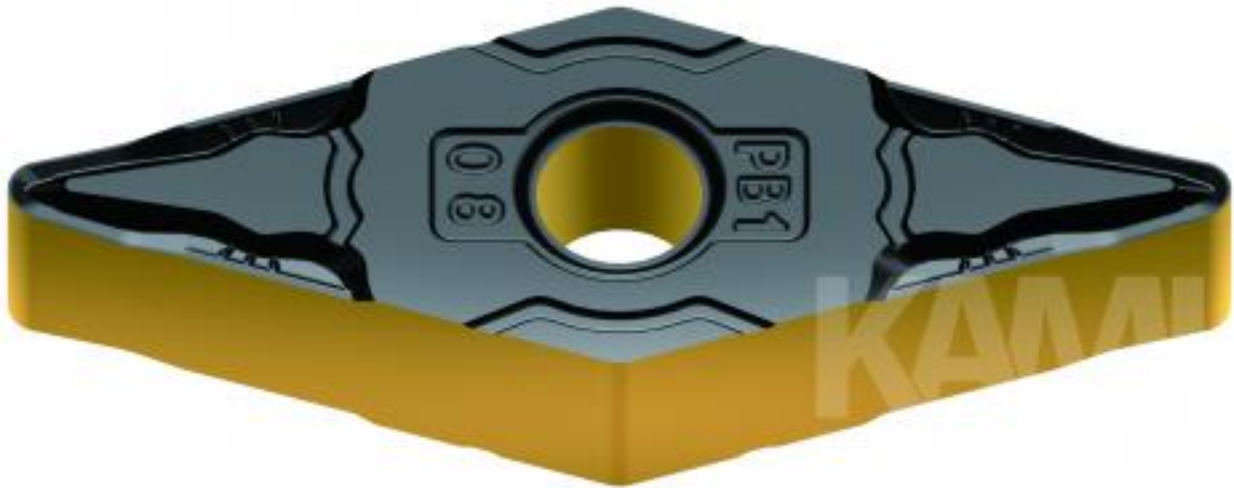


# VBMT160404E-PC2 AC150P



DREHWEENDEPLATTE

# VBMT160404E-PC2 AC150P

## TECHNISCHE DATEN

<b>Wendeschnidplattenform</b>	35°
<b>Freiwinkel</b>	5°
<b>Toleranz</b>	0,127mm
<b>Klemmtyp</b>	T
<b>Schneidelänge</b>	16mm
<b>Plattendicke</b>	4,76mm
<b>Eckenradius</b>	0,4mm
<b>Kantenpräparation</b>	geschliffene Schneide
<b>Spanbrecher</b>	PC2

Technical drawing of the VBMT160404E-PC2 AC150P insert. It shows a grid with various colored blocks (blue, yellow, red, orange, green) representing different material properties or dimensions. The drawing includes a title block and a table of data.

Technical drawing of the VBMT160404E-PC2 AC150P insert. It shows a grid with various colored blocks (blue, yellow, red, orange, green) representing different material properties or dimensions. The drawing includes a title block and a table of data.