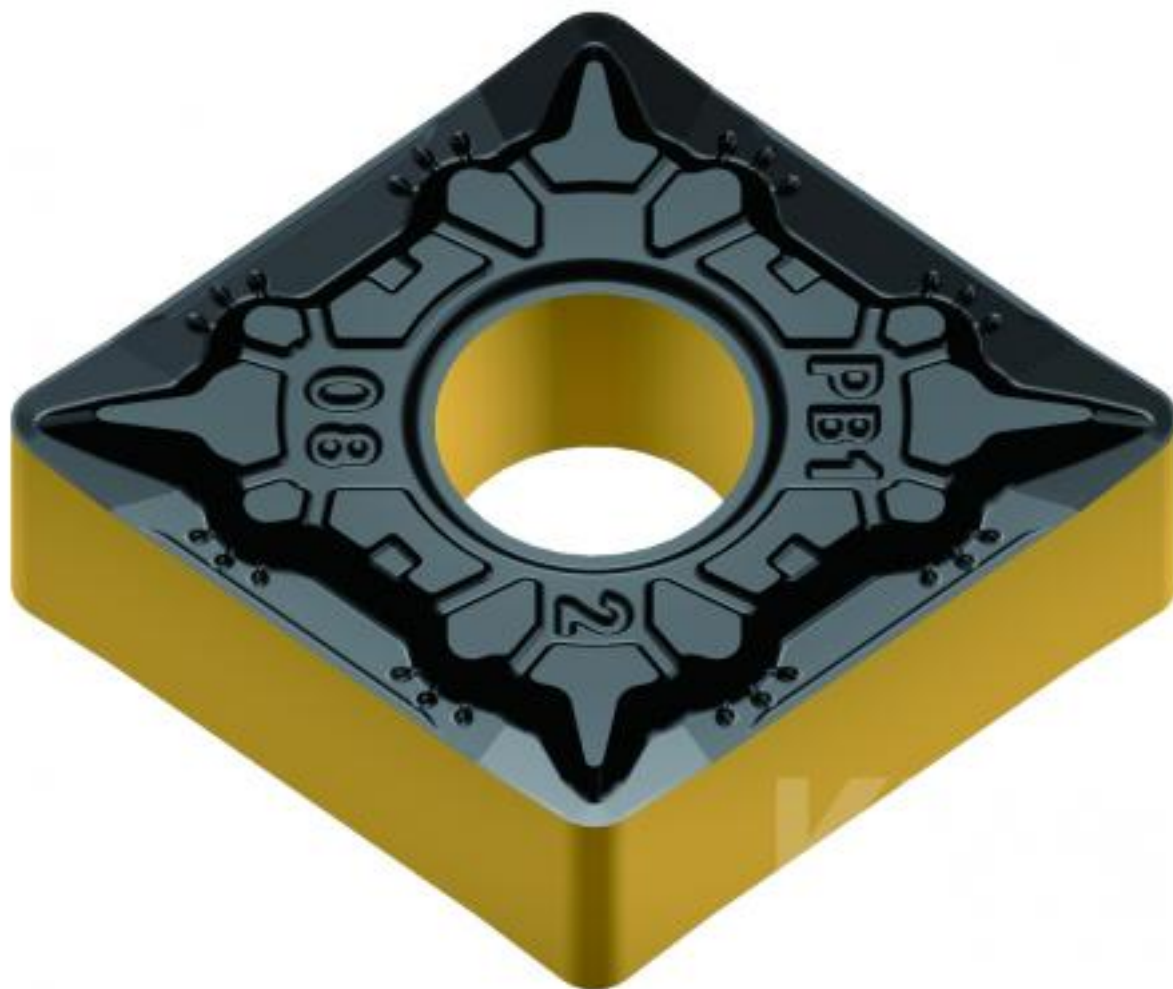


## Drehwendeplatte CNMG190612E-KC4 ACK15A



## DREHWEHDEPLATTE

# Drehwendeplatte CNMG190612E-KC4 ACK15A

### TECHNISCHE DATEN

<b>Wendeschneidplattenform</b>	80°
<b>Freiwinkel</b>	0°
<b>Toleranz</b>	0,127mm
<b>Klemmtyp</b>	G
<b>Schneidelänge</b>	19mm
<b>Plattendicke</b>	6,35
<b>Eckenradius</b>	1,2 mm
<b>Kantenpräparation</b>	geschliffene Schneide
<b>Spanbrecher</b>	KC4

Technical drawing of the CNMG190612E-KC4 ACK15A turning insert. The drawing shows a grid with various parameters and dimensions. The grid is divided into several sections, each with a different color (blue, yellow, red, orange, green). The parameters include: **Wendeschneidplattenform** (80°), **Freiwinkel** (0°), **Toleranz** (0,127mm), **Klemmtyp** (G), **Schneidelänge** (19mm), **Plattendicke** (6,35), **Eckenradius** (1,2 mm), **Kantenpräparation** (geschliffene Schneide), and **Spanbrecher** (KC4).

Technical drawing of the CNMG190612E-KC4 ACK15A turning insert. The drawing shows a grid with various parameters and dimensions. The grid is divided into several sections, each with a different color (blue, yellow, red, orange, green). The parameters include: **Wendeschneidplattenform** (80°), **Freiwinkel** (0°), **Toleranz** (0,127mm), **Klemmtyp** (G), **Schneidelänge** (19mm), **Plattendicke** (6,35), **Eckenradius** (1,2 mm), **Kantenpräparation** (geschliffene Schneide), and **Spanbrecher** (KC4).