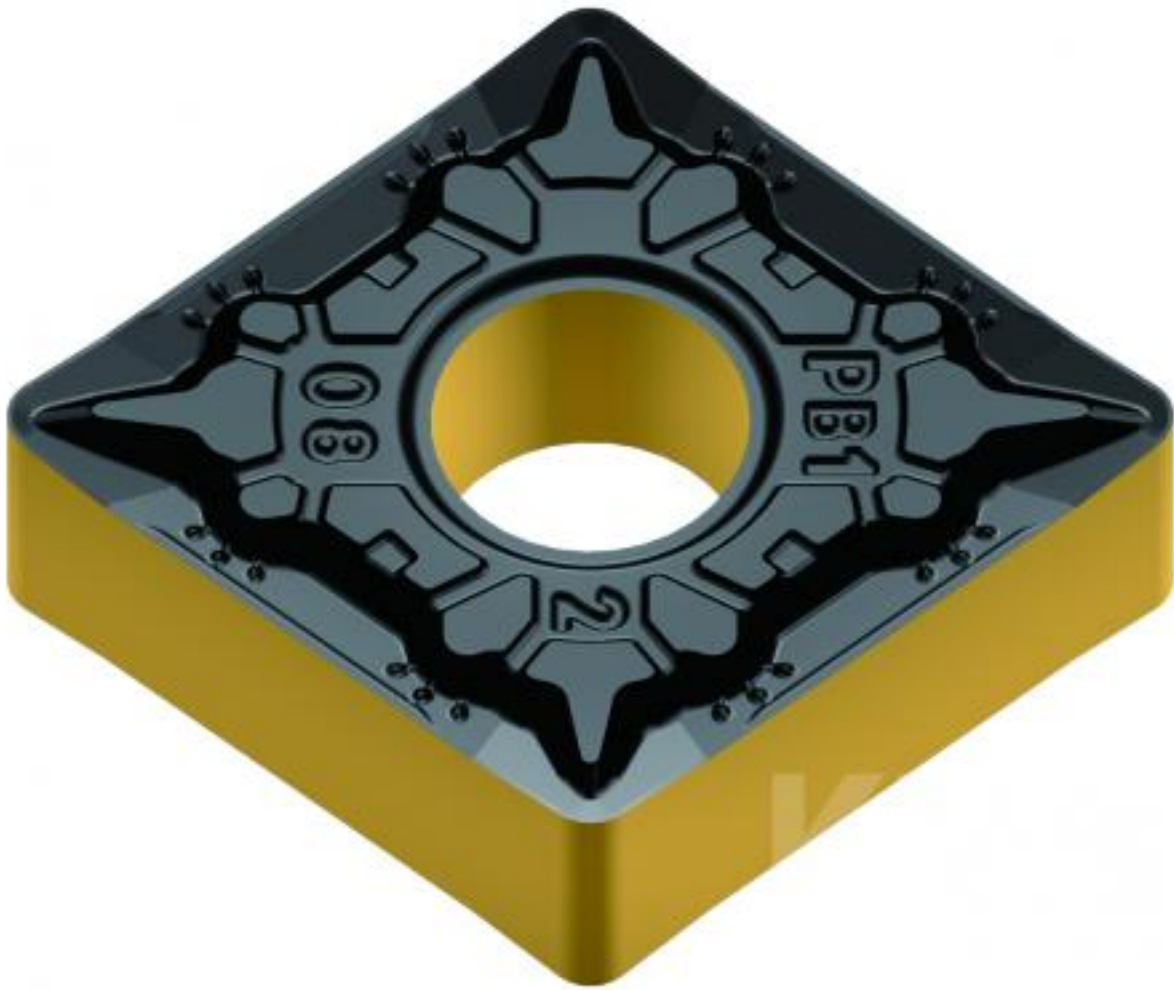


CNMG120408E-PD5 AC250P



DREHWEENDEPLATTE

CNMG120408E-PD5 AC250P

TECHNISCHE DATEN

Wendeschnidplattenform	80°
Freiwinkel	0°
Toleranz	0,127mm
Klemmtyp	G
Schneidelänge	12mm
Plattendicke	4,76
Eckenradius	0,8 mm
Kantenpräparation	geschliffene Schneide
Spanbrecher	PD5

Technical drawing of the CNMG120408E-PD5 AC250P insert. It shows a grid with various dimensions and material properties. The drawing is color-coded with blue, yellow, red, and orange areas. The dimensions are listed in millimeters (mm) and inches (in). The material is identified as AC250P.

Technical drawing of the CNMG120408E-PD5 AC250P insert. It shows a grid with various dimensions and material properties. The drawing is color-coded with blue, yellow, red, and orange areas. The dimensions are listed in millimeters (mm) and inches (in). The material is identified as AC250P.