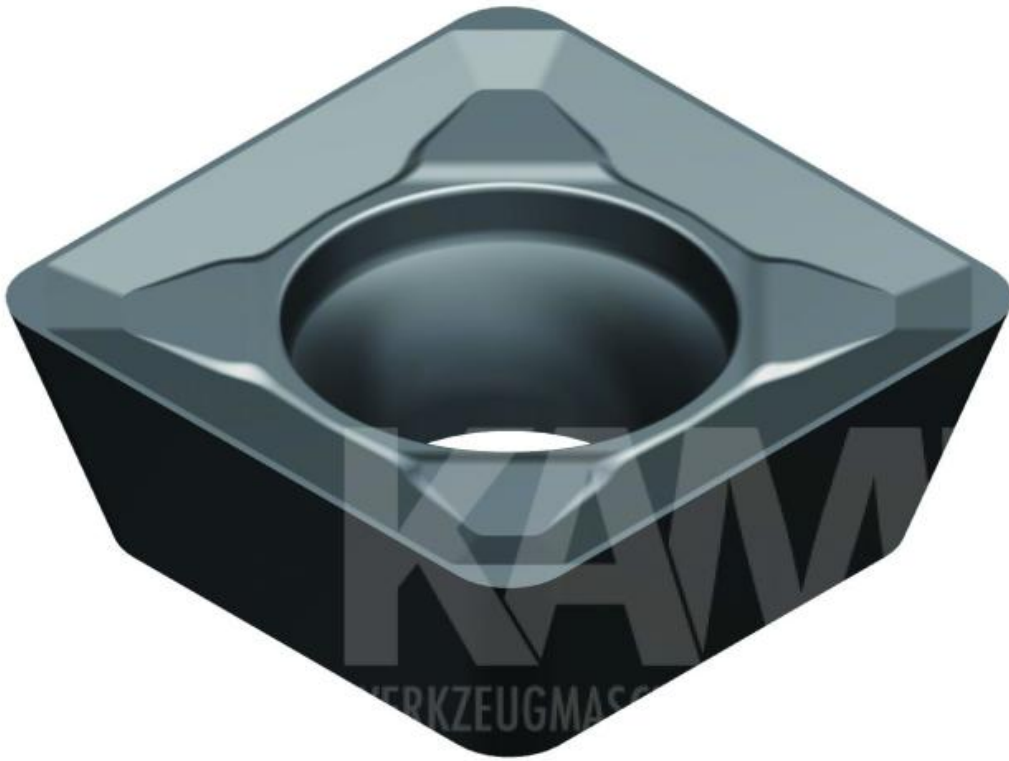


# insert SEKT1204AFER-MR2 AC301P



INSERT

# insert SEKT1204AFER-MR2 AC301P

## SPECIFICATIONS

<b>Wenof thechneidplattenform</b>	S
<b>freewinkel</b>	11°
<b>Toleratz</b>	0,025mm
<b>Klemmtyp</b>	T
<b>Schneidelänge</b>	12mm
<b>Plattendicke</b>	0,4mm
<b>AFER</b>	VERFASSUNG
<b>Spatbrecher</b>	MR2
<b>weight</b>	0,30 kg

Technical drawing of the SEKT1204AFER-MR2 AC301P insert. It shows a grid with various dimensions and material properties. The drawing is titled 'SEKT1204AFER-MR2 AC301P' and includes a legend for material properties.

Technical drawing of the SEKT1204AFER-MR2 AC301P insert. It shows a grid with various dimensions and material properties. The drawing is titled 'SEKT1204AFER-MR2 AC301P' and includes a legend for material properties.