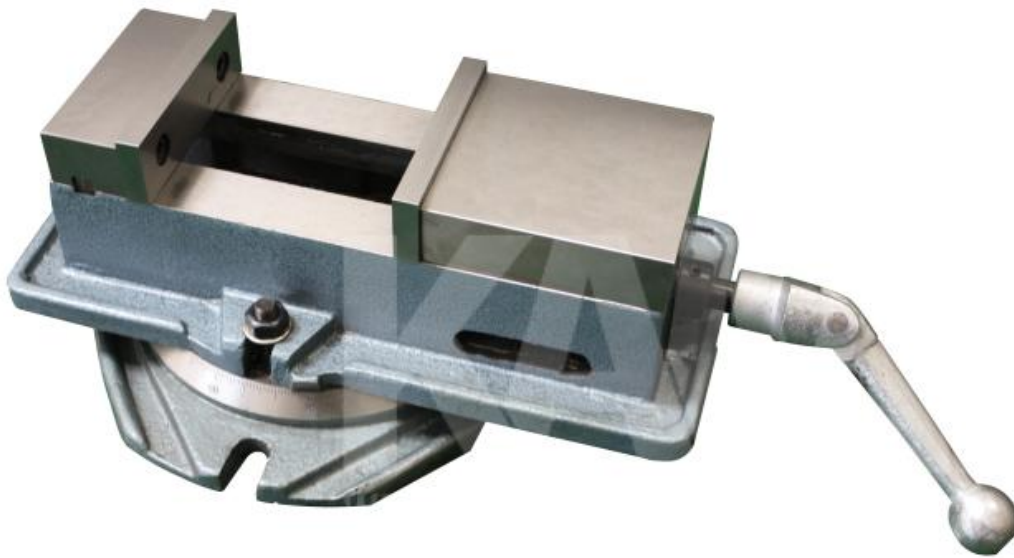


ELV 150E, pull-down Prism

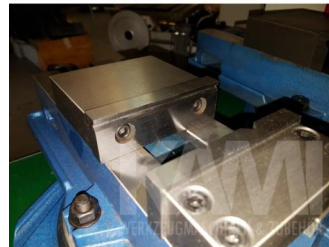


MACHINE VICE

ELV 150E, pull-down Prism

SPECIFICATIONS

| | |
|---|----------------|
| jaw width | 155 mm |
| jaw height | 45 mm |
| clamping width | 160 mm |
| dimensions of the turntables LxBxH | 325x275x40 mm |
| dimensions o. turntable LxBxH | 370x195x120 mm |
| total height | 157 mm |
| weight | 37,00 kg |
| dimensions | 480x320x210 mm |



ACCESSOIRES

turntable