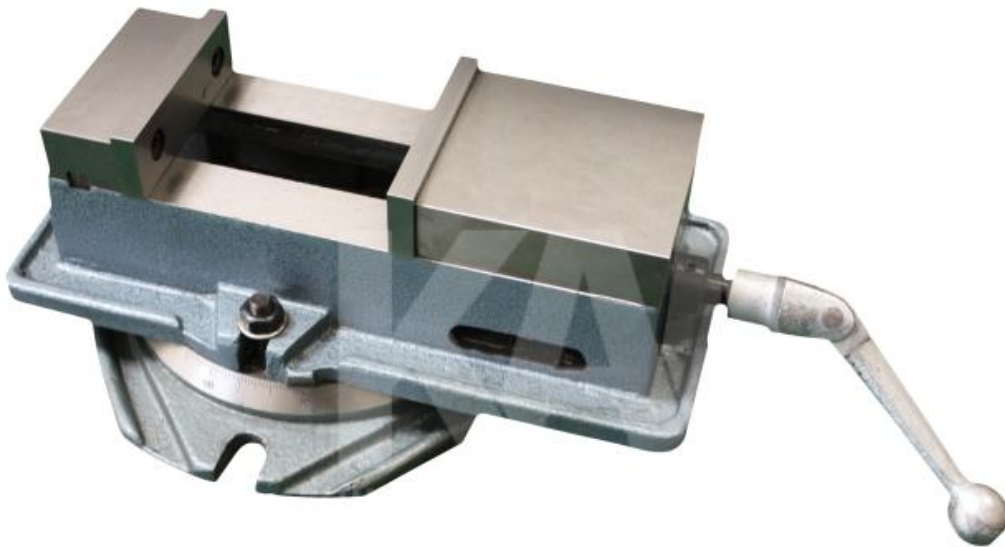


# ELV 100, pull-down



**MACHINE VICE**

# ELV 100, pull-down

## SPECIFICATIONS

<b>jaw width</b>	100mm
<b>jaw height</b>	32 mm
<b>clamping width</b>	100 mm
<b>dimensions turntable LxBxH</b>	245x225x30 mm
<b>dimensions o. turntable LxBxH</b>	310x135x90 mm
<b>total height</b>	118 mm
<b>weight</b>	17,00 kg
<b>dimensions</b>	packed 390x250x190 mm



## ACCESSORIES

turntable