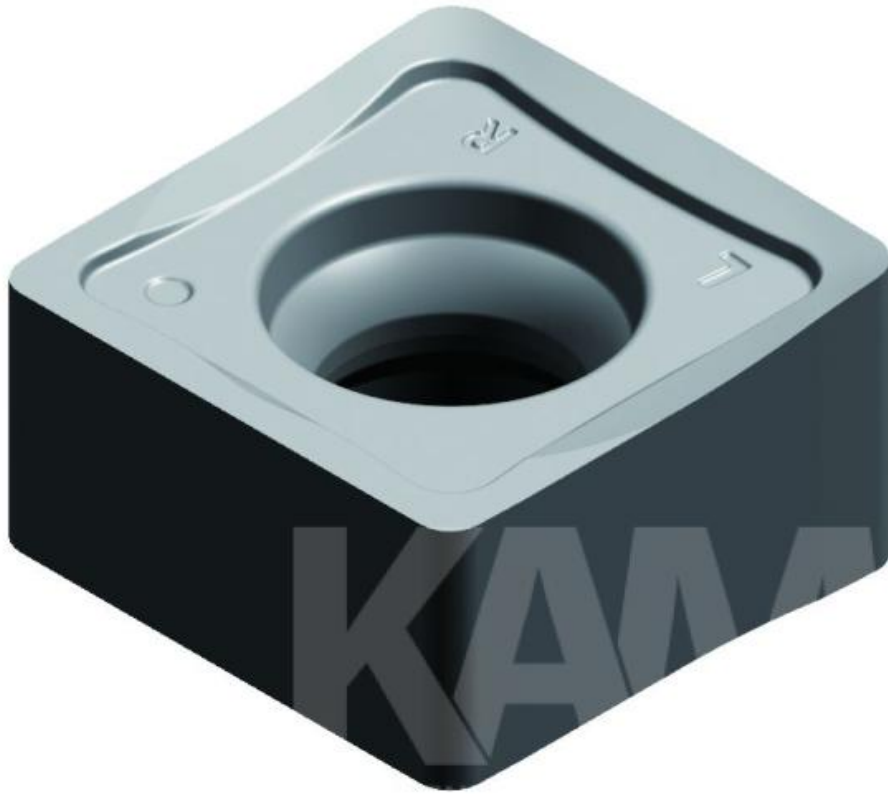


SNMX120620-RR2 AP351U



FRÄSWENDEPLATTE

SNMX120620-RR2 AP351U

SPECIFICATIONS

Wenof thechneidplattenform	90°
freewinkel	0°
Toleratz	0,127mm
Klemmtyp	x
Schneidelänge	12mm
Plattendicke	6,35mm
Eckenradius	2,0mm
Spatbrecher	RR2
weight	0,00 kg

Technical drawing of the SNMX120620-RR2 AP351U end mill. The drawing shows a grid with various parameters and a color-coded legend. The legend includes: Blue (K1), Yellow (K2), Red (K3), Orange (K4), Green (K5), and Grey (K6). The grid contains numerical values for various parameters, including cutting speed, feed rate, and tool life.

Technical drawing of the SNMX120620-RR2 AP351U end mill. The drawing shows a grid with various parameters and a color-coded legend. The legend includes: Blue (K1), Yellow (K2), Red (K3), Orange (K4), Green (K5), and Grey (K6). The grid contains numerical values for various parameters, including cutting speed, feed rate, and tool life.