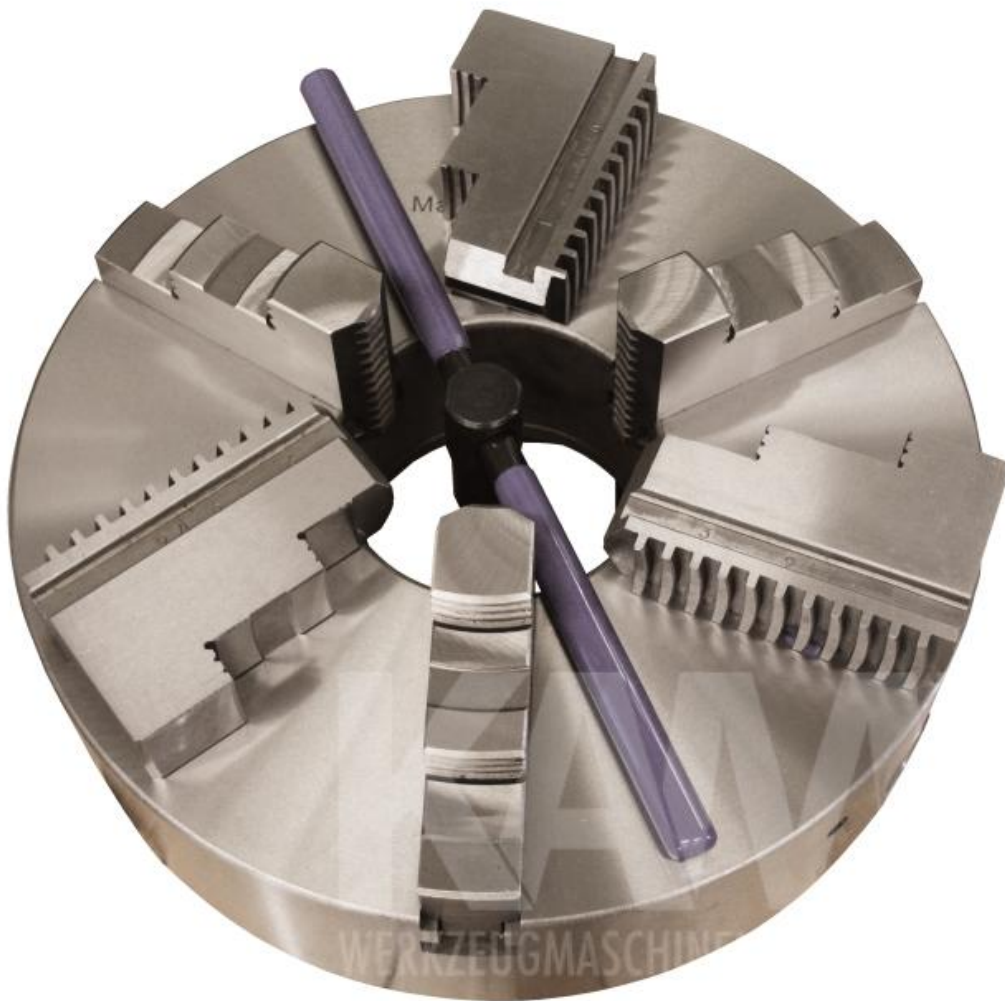


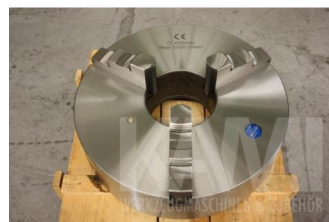
**3-B standarddrehfutter D=400, K11, cast iron, one-piece jaws**

**LATHE CHUCK**

**3-B standarddrehfutter D=400, K11, cast iron, one-piece jaws**

**SPECIFICATIONS**

<b>diameter</b>	400 mm
<b>fixing</b>	6 St. M 16
<b>pitch circle</b>	362 mm
<b>centering margin</b>	330 mm
<b>opening dimensions</b>	130 mm
<b>width over all</b>	173,5 mm
<b>chuck body</b>	100 mm
<b>max. speed</b>	1000 U/min
<b>weight</b>	91,00 kg
<b>dimensions</b>	470x470x240 mm



**DIN 6350  
PLAIN BACK**



SIZE D	D1	D2	D3	H1	h	Z-d	
						Back mounting	Front mounting
80	58	67	16	50	4	3-M8	3-M8
100	70	83	22	65	3	3-M8	3-M8
125	85	108	30	88	4	3-M8	3-M8
160	125	140	45	85	5	6-M10	3-M10
200	160	176	65	75	8	6-M10	3-M10
250	200	224	80	80	8	6-M12	3-M12
315	260	288	100	90	6	6-M16	3-M16
400	330	362	130	100	6	6-M16	3-M16
500	420	458	210	115	6	6-M16	-
630	545	588	252	135	7	6-M16	-