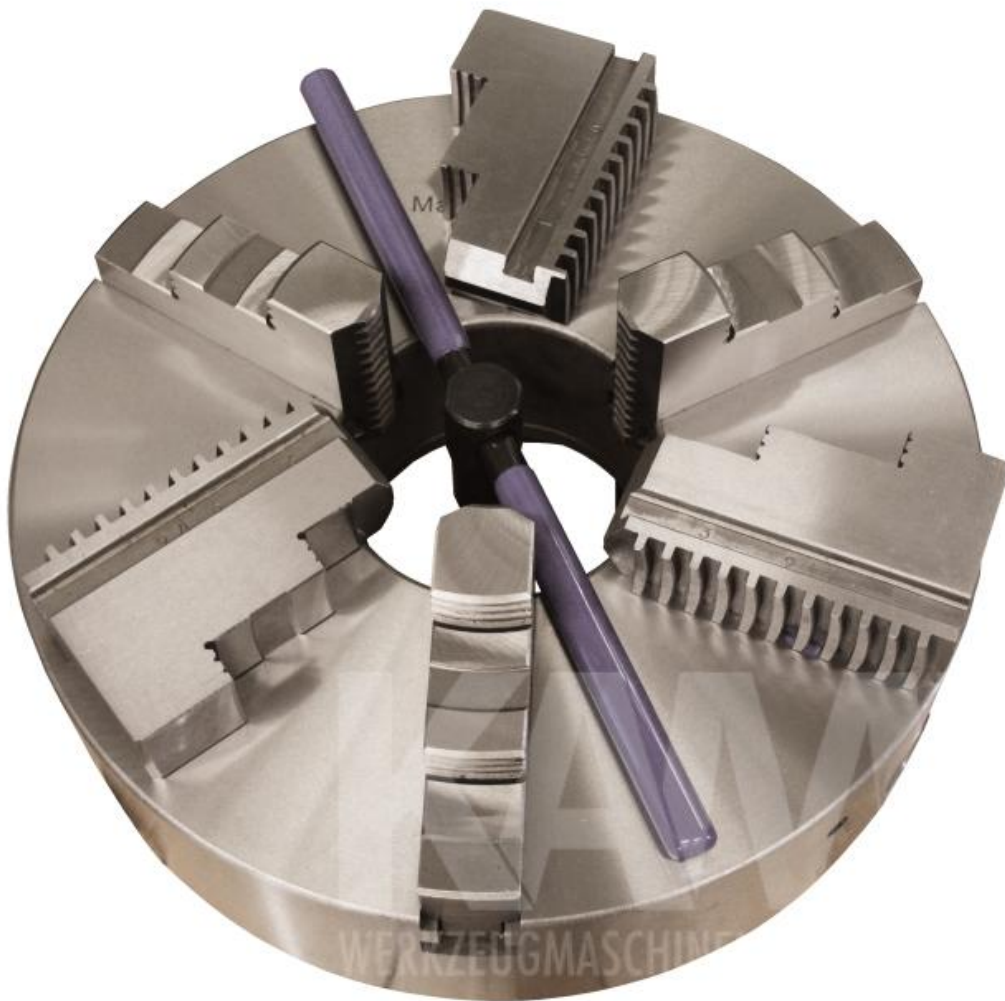


**3-B precision lathe chuck D=250, DIN6350, cast iron, seperatee jaws**



**LATHE CHUCK**

**3-B precision lathe chuck D=250, DIN6350, cast iron, seperate jaws**

**SPECIFICATIONS**

<b>weight</b>	27,00 kg
<b>dimensions</b>	260x260x200 mm