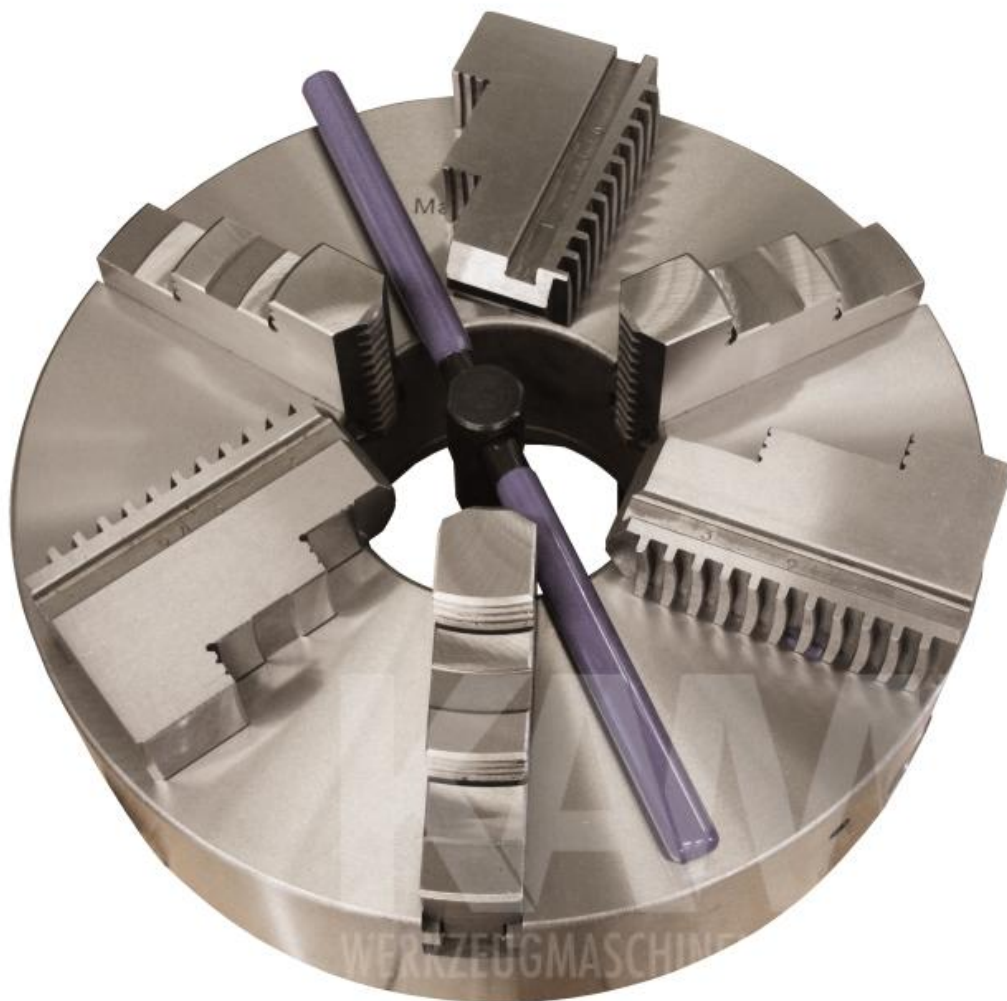


**3-B precision lathe chuck D=250, DIN6350, cast iron, one-piece jaws, fontgebohrt**



**LATHE CHUCK**

**3-B precision lathe chuck D=250, DIN6350, cast iron, one-piece jaws, fontgebohrt**

**SPECIFICATIONS**

**weight** 27,00 kg  
**dimensions** 260x260x200 mm



**DIN 6350  
PLAIN BACK**

SIZE D	D1	D2	D3	H1	h	Z-d	
						Back Mounting	Front Mounting
80	56	67	16	50	4	3-M8	3-M8
100	70	83	22	55	3	3-M8	3-M8
125	95	108	30	58	4	3-M8	3-M8
160	125	140	45	65	5	6-M10	3-M10
200	160	176	65	75	5	6-M10	3-M10
250	200	224	80	80	5	6-M12	3-M12
315	260	286	100	90	6	6-M16	3-M16
400	330	362	130	100	6	6-M16	3-M16
500	420	458	210	115	6	6-M16	-
630	545	588	252	135	7	6-M16	-