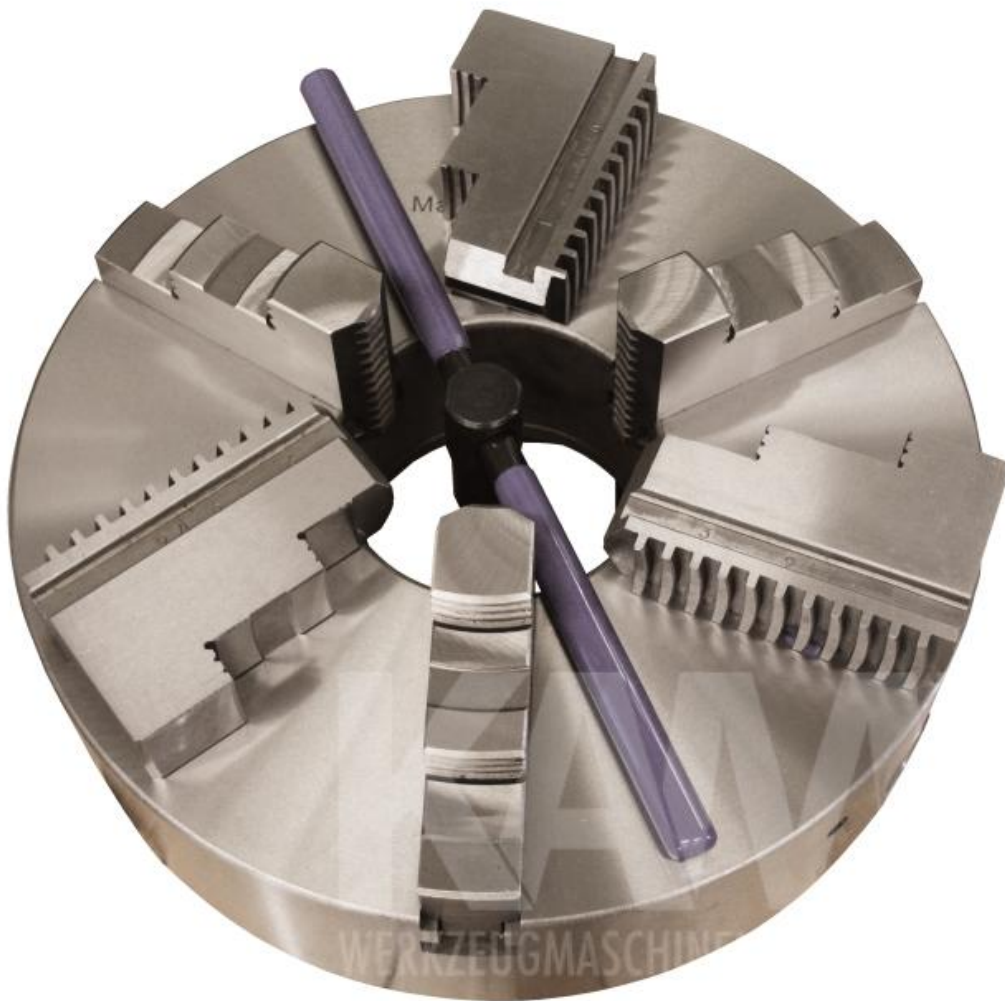


## 3-B precision lathe chuck D=125, K11, cast iron



## 3-B precision lathe chuck D=125, K11, cast iron

### SPECIFICATIONS

<b>diameter</b>	125 mm
<b>pitch circle</b>	108 mm
<b>centering margin</b>	95 mm
<b>opening dimensions</b>	30 mm
<b>width over all</b>	84,5 mm
<b>chuck body</b>	58 mm
<b>max. speed</b>	3000 U/min
<b>weight</b>	6,50 kg