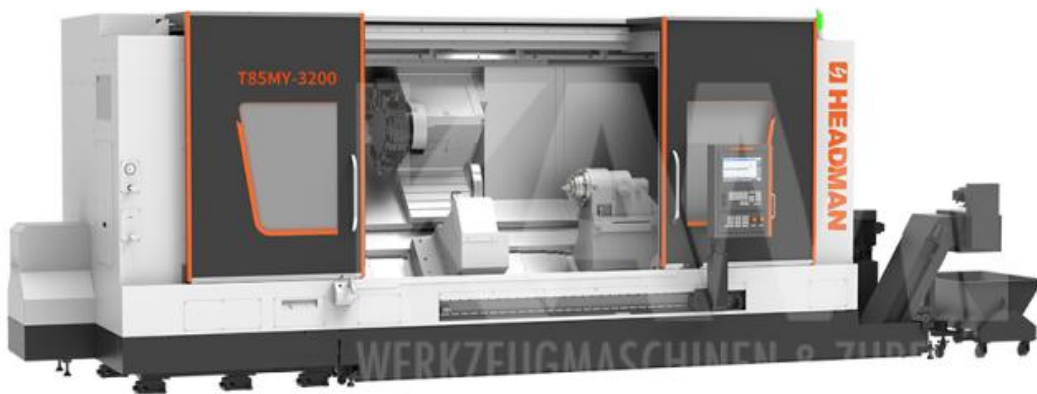


T 85MY/3200



HIGHLIGHTS

- » THK linear guide ways
- » extreme stiffness machinesgittel
- » quickste changing timeen for high Produktivität
- » Randlto the main spindle mm
- » positioning accuracy X/Z: mm
- » Time of Warranty 2 Jahre at aschichtigem operation
- » 6-position supported main spindle
- » also withLive Tools possible to order!

T 85MY/3200

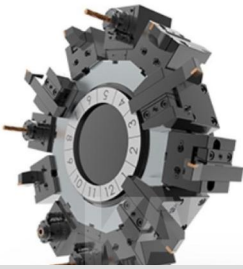
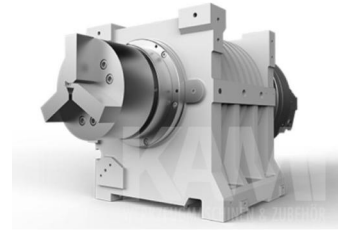
SPECIFICATIONS

max. swing over bed	850 mm
max. working length	3200 mm
max. working diameter	600 mm
Max. speed build in Motor	2000 U/min
build in Motor Power permanent/30min	60/92,4 KW
spindlenose	A2-15
diameter of spindlehole	185 mm
spindle bore/Bar through max.	- mm
tool Stations	12 with cross-section 32 mm
Time of Toolchange	0.25 s
taper boring tool max.	60 mm
taper Tool cross-section max.	32 mm
Toolchange drive by	Servomotor
locked of the tool changer	Hydraulic
speed milling axis	3000 U/min
Power milling axis	8,8 KW
values milling axis	drilling 30mm/crossfräsen 50mm/thread M30x5
movement of X-axis	360mm
movement of Z-axis	3345mm
movement of Y-axis	180 (+/-90) mm
rapidfeed X-Axis	30m/min
rapid feed Z-axis	24m/min
rapid feed Y-axis	15m/min
SPindle runout axial	- mm
SPindle runout radial	- mm
positioning accuracy bidirektional X	0.011 mm
positioning accuracy bidirektional Z	0.021 mm
positioning accuracy bidirektional Y	0.008 mm
positioning accuracy unidirektional X	0.003 mm
positioning accuracy unidirektional Z	0.006 mm
positioning accuracy unidirektional Y	0.003 mm
repeat accuracy X/Z/Y	- mm
quill diameter	- mm
quill konus	morse cone -
Volumen Hydraulic tank	- L
Capacity coolant tank max.	- L
enginepower of cooling pump	- W
power of engine permanent	- KW
power of engine short time (30 min)	- KW
dimensions	7740x2700x2867 mm

T 85MY/3200

KAMI GmbH - Eisenstraße 20 - 30916 Isernhagen
Telefon (+49) 511 - 519 312-0
www.kami-maschinen.de

T 85MY/3200



ACCESSOIRES

cooling device, 12-fold tool changer, - mm hydr. collet chuck, linear guide ways and ball lead screw from THK/Japan, control system Siemens 828D, programmabler tailstock, german Operating documents, CE conformityerklärung etc.

Optionen: conveyor, Workpiece measurement, automatic Toollength correction, Bar feeder, air blow function for tool changer and lathe chuck, cooling by Spindle, high pressure cooling, Oil Mist Collector, hollow chuck 250 mm, hydr. Rest SMW Autoblok,