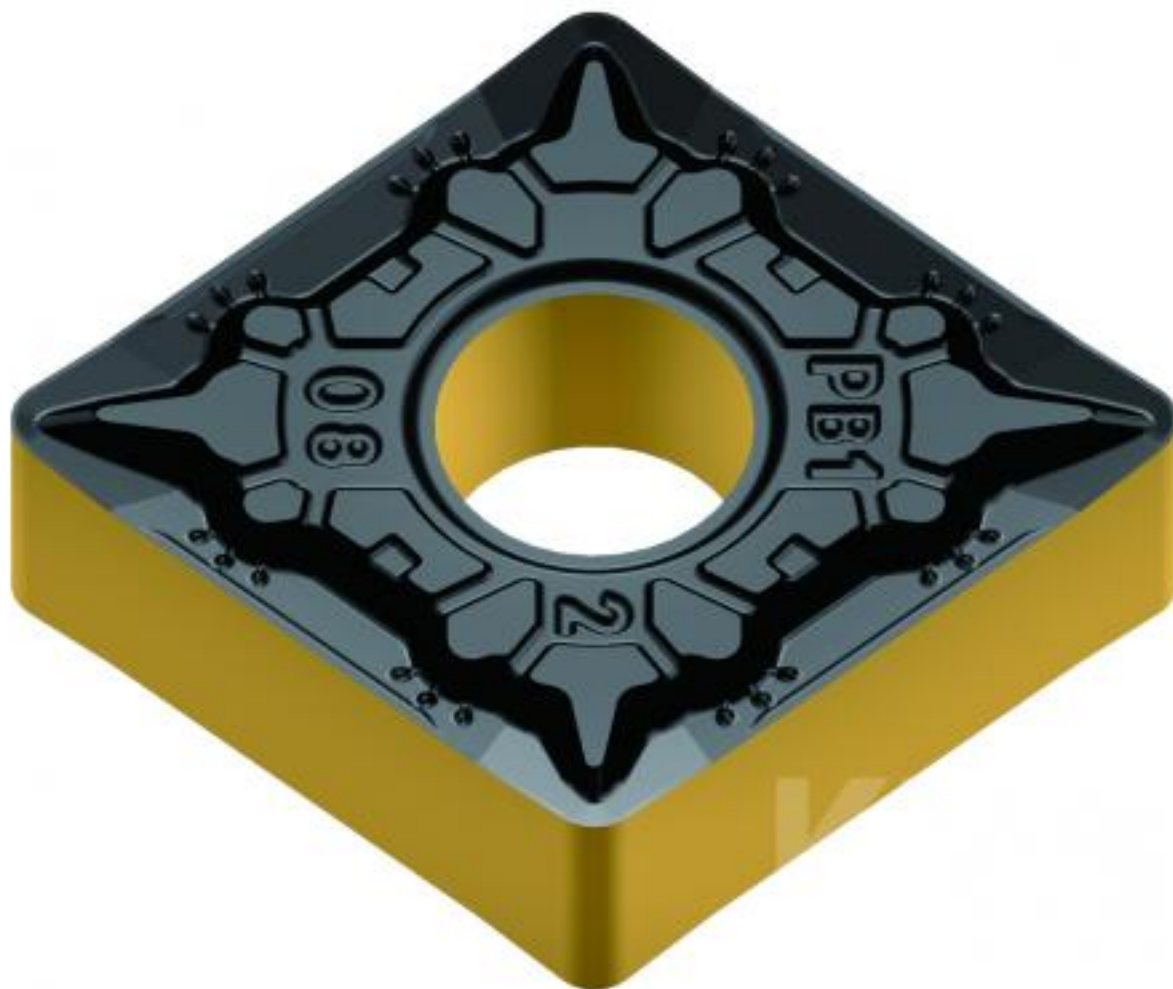


# CNMG120408E-MC4 AP301M



DREHWEENDEPLATTE

# CNMG120408E-MC4 AP301M

## TECHNISCHE DATEN

<b>Wendeschnidplattenform</b>	80°
<b>Freiwinkel</b>	0°
<b>Toleranz</b>	0,127mm
<b>Klemmtyp</b>	G
<b>Schneidelänge</b>	12mm
<b>Plattendicke</b>	4,76
<b>Eckenradius</b>	0,8 mm
<b>Kantenpräparation</b>	geschliffene Schneide
<b>Spanbrecher</b>	MC4

Technical drawing of the CNMG120408E-MC4 AP301M insert. It shows a grid with various dimensions and material properties. The drawing is color-coded with blue, yellow, red, and orange areas. The dimensions include: 12mm (length), 4.76mm (thickness), 0.8mm (corner radius), and 80° (insert angle). The material is identified as AP301M.

Technical drawing of the CNMG120408E-MC4 AP301M insert. It shows a grid with various dimensions and material properties. The drawing is color-coded with blue, yellow, red, and orange areas. The dimensions include: 12mm (length), 4.76mm (thickness), 0.8mm (corner radius), and 80° (insert angle). The material is identified as AP301M.